

# Wayland Partnership News

## April 2017



*The Wayland Partnership promotes the  
Economic, Social, Cultural and Environmental  
Well-being of all who live and work in Wayland.*



**Wayland Partnership, Wayland House, Watton, Norfolk IP25 6AR**  
**Registered Charity No. 1081310: Company No. 3869712**

## Contents

Page 2	Contents: Changes at Wayland House
Page 3	Wayland photography Challenge; The Dragonfly Gallery
Page 4	Wayland Volunteer Awards
Page 5	The Happy Project
Page 6	The Wayland Tapestry; Engaging Communities OpenDay
Page 7	Open Day at the Grange; Workshop programme for 2017
Page 8	Well Wayland—Health & Wellbeing Marquee, Job Fair
Page 9	Growing Together; Blossom & Yarn
Page 10	Events and Workshops in the Gallery
Page 11	Community Events
Page 12	Directions, Contacts, Funders

---

We are anticipating some major changes at Wayland House this summer. Change can be difficult, daunting and even a bit scary, and for the Trustees of the Wayland Partnership, these changes are probably all three. But change can also be seen as positive and an opportunity to develop and that is how the Trustees and our many Partners need to see it

Susan has been the energy and inspiration behind the development of the Dragonfly Gallery for the past ten years. She has nurtured both the volunteers and artists and done a wonderful job for us. In addition we have had the support of her husband Richard who has helped us with maintaining the building. As a result of changes in *their* lives, they have decided to leave the Wayland area and make their home in France in the house they have been renovating over the past few years. We will miss Susan enormously, not just for her excellent work, but for the warmth of her character and her love for what she does



Susan's departure will be a loss, but we have to add to it the loss of Suzanne, whose husband, Alastair, is moving to a new post in Aberdeenshire and so they and their two children will also be building a new life far away from Wayland.

Suzanne has been a breath of fresh air for the Partnership and has made a real difference in the time she has been with us— from the Well-Wayland group and the Marquee at the Wayland Show, to the Men's Shed and the Job Fair and so much more. She will be so greatly missed by so many local individuals and groups, and especially by the Trustees.

Susan and Suzanne are off to meet new challenges in their lives and we have the challenge of finding new people who will, hopefully, love the Wayland area and serve it as well as they have done.

## The Wayland Photography Challenge



Wood Anemone



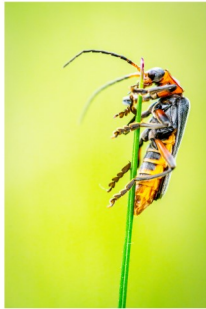
Wayland Wood Bluebells



Snow Drops



Early Purple Orchid



Soldier Beetle



Yellow Star of Bethlehem

Although the Wayland Photography Challenge will not be launched until June with the exhibition in August, now may be a good time to get out and about in the Wayland countryside. The warm weather has brought on the spring flowers— we saw banks of primroses at the weekend and the daffodils will be out in Merton, closely followed by the bluebells in Wayland Wood.

What we want from the competition is pictures of Wayland –the life, the

landscape, the flora and fauna, the historic buildings, events in the Wayland Villages—Fetes, Garden Openings, Blossom & Yarn, Sports events etc.

There was a good entry last year but we would like twice as many in 2017. You do not have to be a Wayland Resident to take part, but your pictures must be of Wayland. Anyone can enter and you do not need expensive equipment. There is a separate section for professionals, and a peoples choice vote throughout August. Entry forms will be available from Wayland House from the end of April.

## The Dragonfly Gallery



In the Dragonfly Gallery until April 15th is a delightful show by the **Elsing Artists**. There are stunning, bold ceramic pots. Watercolours, felt-work and yarn-work and textiles featuring exquisite smocking.

At the end of April we have a solo show “**The World of Christine Watson**”. Christine produces all kinds of art

work in a range of media and this should be an exciting show.

In May we will be hosting the **Norfolk Open Studios Breckland Taster Event New Horizons**. **Open Studios** is an important event in the Norfolk arts calendar and we are delighted for the Gallery to be involved. Twenty One artists will show their work in the Gallery and there will be a pre-view on the evening of May 19th.



**Wayland Partnership, Wayland House, Watton, Norfolk IP25 6AR**

**Registered Charity No. 1081310: Company No. 3869712**

## Wayland Volunteer Awards 2017

In every community—village, town, community group, charities etc—there are unsung heroes. People who help their neighbours, help at meetings, give their time and energy to fundraising and so on. Some are in the public eye, some quietly get on with the routine tasks. The Wayland Partnership could not function without its team of volunteers whether they are Partner Representatives, Trustees, receptionists, stewards in the Gallery or helping with a specific project such as the Dementia Café or the Happy Project. It is quite a large team—more than sixty—but there is always room for more.

So we want to use the opportunity of our Open Day on May 20th to celebrate the amazing amount of volunteering that already happens across Wayland and to recruit new people to join our team, or to join any of the other groups needing new volunteers across Wayland.

If you know of someone who lives in Wayland who deserves recognition for what they do as a volunteer, then contact Jan (01953 880202 [jan@wayland.org.uk](mailto:jan@wayland.org.uk)) for a nomination form, or pop into Reception at Wayland House if you need a paper copy of the form.

If you would like to volunteer, then contact us so we can add you to our list and if your group needs help from volunteers then let us know and we will add you to our register and hope that we can make a match.



### Why Volunteer?

Most people volunteer because they have time on their hands and want to use it positively. Some volunteer because they are lonely and seek companionship, some want to support a cause that is dear to their hearts and so will *make* the time, some are between jobs and looking to use the time they would have been working, usefully. Some are seeking to build their confidence after a family break. Whatever the reason, there are organisations in every community who need help and will welcome new volunteers with open arms.

## Happenings of The HAPPY Project

The HAPPY Project continues to be very active, hopefully with the advent of these bright sunny days we will become even more active!

The Watton Active Social People (WASPS) continue to meet each month at The Hare and Barrel on Brandon Road, Watton. During April, they will meet at 7:00pm on Monday 10<sup>th</sup> for a social evening and to arrange outings or activities that may interest them. The next planned outing will be held on Saturday 22<sup>nd</sup> April 2017 at Lynford Aboretum and Lake. After the exercise, a refreshment break at Browns Café in Mundford for Coffee and Tea and maybe a Scone or Cake! If you would like further information, please contact Steve on 07845 924543.

The Games Group meets in Watton Library every Friday except Good Friday, from 1:30pm to 3:30pm. They have a wide variety of games including Yahtzee, Scrabble, Dominoes or Draughts and lots of others. Just turn up they will be pleased to see you.

The Family Art and Craft Group meet at Ashill Community Centre. The next meeting will be on Saturday 8<sup>th</sup> April 2017 from 10:00 am to 12 noon. Activities planned will include sowing Sunflower seeds which will be the start of a competition, to see who will grow the tallest Sunflower. We will ask the children to take a photo each month and bring it to the meeting so that we can watch the progress. I guess we will need to make a chart to record the results. We will also need to think about a prize for the winner! Other activities will include making Chocolate nests and baskets to hold the nests, I expect there may be a small egg or three to go in the nests in time for Easter. Rosemary is planning to use an idea given to her by one of her Grandsons who enjoys craft activities, watch this space for photographs of the finished results next month!

Also on the agenda for The Happy Project is The Big Lunch, which will take place on Sunday 11th June 2017 at Wayland House Car Park, I hope to have some Craft Activities available for all ages, all you need to do is please bring some food to share, drinks will be provided.

The HAPPY Project is involved in The Griston Babes in the Wood Festival, which will take place over two days, Saturday 24<sup>th</sup> and Sunday 25<sup>th</sup> June 2017. There will be a Car Boot Sale on Saturday and a "happening" at The Waggon and Horses in the evening where there will be food and music.

On Sunday there will be a Dog Show, BBQ, Charity and Trade Stalls, Tractor Display and some exciting competitions to enter. The aim of the weekend is to raise the profile of Griston, to have fun by bringing the people of Griston together and to hopefully, raise funds for EACH, Home Start and the village. There will be more information next month.

The HAPPY Project is also involved in The Bereavement Café which is held at Babaco's on the last Thursday of the month from 4:00pm to 6:00pm. It is hosted by Verity from Breckland Funeral Services. People come for a chat and talk about the loved ones they have lost, they may talk about how they are feeling or ask for advice. Verity has lots of experience of how people cope with bereavement as well as a wide range of contacts who may be able to provide help. We talk too, about the service that the HAPPY Project may be able to provide in the case of people feeling isolated and lonely.

## The Wayland Tapestry

June 14<sup>th</sup>, 1998 was the date of the official agreement to form a Partnership between the Wayland villages and the Town of Watton. This followed a year of discussions with the Parish Councils and the raising of £25k locally and from the District and County Councils to commission an external consultant to study the area in its Norfolk and regional context and to propose a way forward to bring economic, social, cultural and environmental benefit to the Wayland Community.

In the 20 years since that occasion, the Partnership Team (Staff, Trustees, Representatives and volunteers) has raised more than £3.5 million of public funds; along with earned income and donations the total income would be almost £4 million. In the early years of the new millennium similar Partnerships sprang up all over the country with the support of the Market Town Initiative; almost all of these have disappeared, but the Wayland Partnership has continued to deliver a wide range of projects, events and activities to support the residents and members of the partner parishes and organisations both collectively and individually.

We know that in each community there are individuals and groups of very creative people who do, (and often display in the Gallery and elsewhere) some amazing craft work. Over the coming year, we would like to harness these skills by inviting each village community to create a panel depicting their village. It might be a part of the village history such as the Knights of St John, or the Babes in the Wood. It might be some architectural features, a hall, or thatched cottages; it might be a montage of several features. Whatever is chosen will either celebrate the past or the present, or both, will say something significant about each of our 14 (or 16) villages and will become a part of the village and the Partnership Heritage. When complete the framed panels can be displayed in the village, become part of a heritage trail and be brought together as a part of any community celebration.

The Partnership Team will seek funding to provide the materials for a panel 18" (46cm) wide by 10" (25cm) and when complete will have each panel stretched, mounted and framed. We hope the funding will also meet venue costs for meetings and creative days. The intention is to complete the project in time for a 20th anniversary celebration in June 2018.

If you/ your group would like to take part in this project please contact Jan 01953 880202.

## Your Invitation to call in to the Engaging Communities Open Day Queens Hall May 20<sup>th</sup> 10.00am to 2.00pm Includes Wayland Volunteer Award



# **The Grange**

## **Great Cressingham**

### **Open Day & AGM 2017**

**When: Saturday 6th May, 2017 10.30am – 4.30pm**

**Where: Great Cressingham**

**Please join us for our first Open Day and public AGM.**

For 5 years, The Grange has been welcoming people from near and far to develop a pioneering project offering therapeutic opportunities on a permaculture smallholding. We are recognised nationally as a permaculture demonstration site and as a Home of Sanctuary.

Come along to our Open Day and AGM to find out more about what we do and how you can get involved.

This is a unique opportunity to meet some of the people behind the project including some of those who have benefited from it. There will be workshops, walks, food and much more. It is suitable for all the family. Free lunch provided.

Details and FREE registration at:  
<http://thegrangenorfolk.org.uk/agm>

If you have any questions please e-mail  
Ben at [ben@thegrangenorfolk.org.uk](mailto:ben@thegrangenorfolk.org.uk)  
or on 07954043674.



The next meeting will be held on **Wednesday 26th April at 10am at Wayland House**. The meeting is open to anyone with an interest, whether professional or personal, in health and wellbeing in the Wayland area. Please email [Suzanne@wayland.org.uk](mailto:Suzanne@wayland.org.uk) if you would like further information.



### Health & Wellbeing Marquee at the Wayland Show

The Wayland Partnership Development Trust will again be hosting the **Health and Wellbeing Marquee** at the Wayland Show in Watton this year. The Wayland Show is an annual event, taking place on **Sunday 6<sup>th</sup> August 2016** (gates open at 10am), which attracts between 8-12,000 visitors.

Building on the success of the previous two years, where the marquee was sold out well before the Show date, we want to feature a broad spectrum of organisations representing both physical and mental wellbeing. If your business, organisation or charity, represents any of these aspects, then we would love to hear from you.

*"Thank you for the chance to be part of the show; it was amazing for a one day event and we would certainly like to come along again"* Jill & Graham Darken, Dereham & District Guide Dog Fundraisers

*"Thanks very much for all your hard work in organising this event. I thought it was all very well planned and run, and as you know, I did very well and am most happy (and surprised!) with how the event went for me."*  
Suki Pryce, Palm Reader

The fee structure for the pitches has been kept affordable to ensure that we get the right people there. If you would like to know more, please get in touch with Suzanne or go to the following page on our website for more information or to download the booking form [www.wayland.org.uk/health-wellbeing-marquee-at-the-wayland-show-watton](http://www.wayland.org.uk/health-wellbeing-marquee-at-the-wayland-show-watton).

### Wayland Job Fair 2017

This year's Wayland Job Fair which took place on Tuesday 28th March at the Queens Hall in Watton was another resounding success. Over 150 people from Watton and the surrounding area came along to meet over 25 employers including Center Parcs, Wincanton and the RAF as well as a number of organisations available to talk to about apprenticeships, training and help with transport to work. Many people left with job opportunities to pursue and employers were delighted with the turnout by local people.

The event was the culmination of a wider Job Centre and Breckland Council Roadshow that has been travelling to all Breckland towns over the past few months, with the aim of bringing jobs and advice to the communities where it is needed. Following the success of the Roadshow it is hoped that this will now become a regular event in the calendar with another event planned in September and again in March 2018.

If you are a local employer and would like to register your interest to attend future events please get in touch to ensure a place at this popular event. Contact Suzanne Rhind on 01953 880204



## GROWING TOGETHER PROJECT

The project continues to be a veritable 'hive of activity'.

Nature ( and Wildlife Acts) are now dictating to us what we can and can't do with regard to the projects. No more thinning or cutting of tree's and hedges as we respect the birds who are busy nest building. To help them along the way the Post Code Lottery Funding has enabled us to purchase a quantity of special heavy duty 'Woodcrete' bird nesting boxes. They come highly recommended by conservation and wildlife groups and should last up to 25 years!

Wood peckers, as beautiful as they are, pose a real threat to wooden nesting boxes (and bee hives), so the decision was taken to invest in the latest technology which will ensure longevity/ sustainability and ease of cleaning. We are possibly too late for this nesting season for occupancy but we will get the boxes distributed and placed this month.

The other major project getting off the ground this month is the wildflower surveying of 13 of our Wayland Churchyards. All training and recruitment of our County Wildlife Surveyors will be completed by 8<sup>th</sup> April. So, if you visit your local church and see an area roped/cordoned off that will probably be for our surveys. We have had a tremendous amount of interest in this project with a record numbers of volunteers coming forward via our project partners at Norfolk Wildlife Trust.

Highlighting the drastic effects on our wildlife from discarded litter is my next initiative. Litter pick kits to KEEP WAYLAND TIDY will be offered to community groups in the coming months, so WATCH THIS SPACE.



### Blossom & Yarn 7—10 July 2017

Remember the last amazing event in 2015? Well here it comes again! A spectacular Festival of knitting and flowers in six Wayland Villages



Theme –The Creation—six exciting tableaux ar six historic venues.

Early Bird Tickets £6.00 on the door £8.00 Contact Karen Fitch 079-9 510718 or go online [www.blossomandyarn.co.uk](http://www.blossomandyarn.co.uk)

Have a great day out –or two or three —refreshments available.



## Exhibitions and Events in the Dragonfly Gallery, Wayland House 2017



February 25 <sup>th</sup> 10.00	Launch of 2017 season
February 25 <sup>th</sup> to March 11 <sup>th</sup>	'Once Upon a Time' Wayland Book Week
March 7 <sup>th</sup> 10.30-12.30	Calligraphy Demonstration with Christine Robinson
April 1 <sup>st</sup> to April 15 <sup>th</sup>	Elsing Artists Exhibition
April 29 <sup>th</sup> to May 13 <sup>th</sup>	The World of Christine Watson Exhibition
May 19 <sup>th</sup> – 21 <sup>st</sup>	Norfolk Open Studios Breckland Taster Exhibition
	New Horizons (Preview May 19 <sup>th</sup> 7.00pm)
June 3 <sup>rd</sup> to 17 <sup>th</sup>	The Tiffey Valley Painters Exhibition
June 17 <sup>th</sup>	Launch of Wayland Photography Challenge
July 1 <sup>st</sup> to July 15 <sup>th</sup>	Liz Reed & Maggie Barton 'Summer Glass & Art Combining Colours' Exhibition
July 27 <sup>th</sup> to August 31 <sup>st</sup>	Photography Challenge Wonderful Wayland Exhibition Including People's Vote
Sept 16 <sup>th</sup> to Sept. 30 <sup>th</sup>	Helena Anderson Children of the World Exhibition
October 14 <sup>th</sup> to October 28 <sup>th</sup>	Marie Dawe & Sue Welfare Looking East –A Seasonal Exploration
November 4 <sup>th</sup> to 18 <sup>th</sup>	Super Smashing Grout Mosaic Exhibition
Nov. 25 <sup>th</sup> to Dec 20 <sup>th</sup>	"Its beginning to look a lot like Christma (Christmas Arts and Crafts Exhibition)

## Creative Workshops at Wayland House 2017

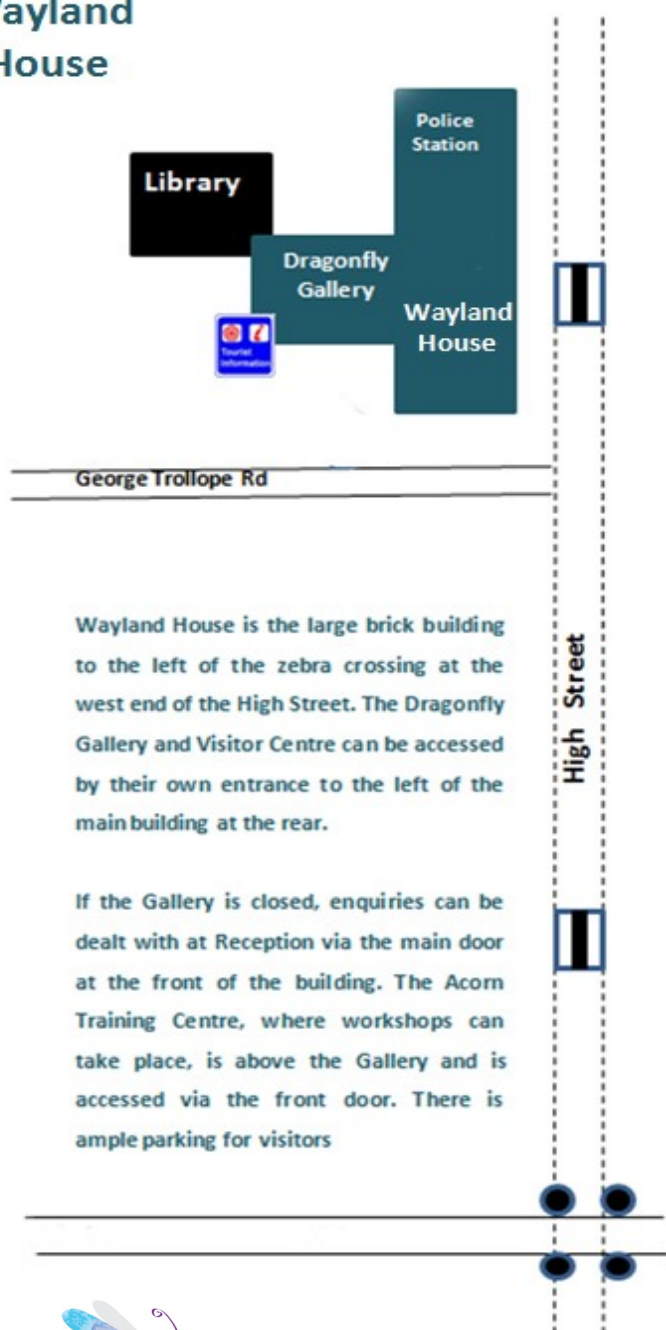
Feb. 25 <sup>th</sup> 10.00 – 4.00	Creative/Life Writing with Author & Artist Sue Welfare
March 4 <sup>th</sup> 2.00-5.00	Poetry/Creative Prose with Heidi Williamson
March 11 <sup>th</sup> 10.00-4.00	Cartoon/Illustration With Andy Scordelis
March 25 <sup>th</sup> 10.00-1.00	Calligraphy Workshop with Christine Robinson
April 29 <sup>th</sup> 10.00-4.00	A Taste of India Embroidery with Dilys Harvey
May 6 <sup>th</sup> 10.00- 4.00	Stained Glass Workshop with Alby Stained Glass
May 20 <sup>th</sup> 10.00-1.00	Calligraphy Workshop with Christine Robinson
June 3 <sup>rd</sup> 10.00-1.00	Calligraphy Workshop with Christine Robinson
June 10 <sup>th</sup> 10.00-4.00	Calico Garden Embroidery with Dilys Harvey
July 8 <sup>th</sup> 10.30-4.00	Silk Painting Workshop with Elizabeth Scott
September 23 <sup>rd</sup> 10.00-4.00	Fusing Fabrics Dilys Harvey
November 4 <sup>th</sup> 10.00-4.00	Kantha Quilting with Dilys Harvey
December 2 <sup>nd</sup> 10.00 – 1.00	Christmas Wreath with Jane Dalton

## Programme of Watton & Wayland Events 2017

February 15th 5.30	Wayland Chamber Buffet & AGM Broom Hall
March 28th 1.00-6.00	Wayland Career and Jobs Fair Queens Hall
April 22nd	Wayland Show Charity Ball Lynford Hall
June 11th TBC	Big Lunch Wayland House
June 8th to June 10th	<b>The Wayland Festival 2017</b>
	<b>Thursday, 8th June</b>
	Afternoon - Perfect Vintage 50s Nostalgia Show
	Evening - Doug Segal - Comedy Mind Reader
	<b>Friday, 9th June</b>
	Afternoon - Rachel Duffield - 40s Cabaret
	Evening - Bella Musica with Dale Bullimore
	<b>Saturday 10th June</b>
	Morning - Alex Clown. Children's Show
	Afternoon-Four4Jazz
	Evening - Queen Tribute Band - Queens Hall
July 7th – 10th	Blossom & Yarn – 7 Days & Beyond. Knitting and Flower Festival across 6 Wayland Churches
August 6th	Wayland Show Brandon Rd. Watton
	from 10.00am. Gates open 10.00am. Tickets: online £10.00 Children £4.00 Family £25.00 At Gate £15.00/ £5.00/ £35.00
September 3rd	Lavender's Lunch College Farm Thompson
September 3rd	Watton Carnival Watton High Street
September 13th	Business Showcase 5.00-8.00
October 17th	Tourism Conference 10.00 – 4.00
October 28th	Watton Fireworks - Brandon Rd. Show Ground
November 25rd	Small Business Saturday – Watton High Street
December 3rd	Watton Festive Market – Watton High Street
December 26th to 31st	Aladdin – Traditional Pantomime Melsop Farm Park



## Wayland House



### Contact us:

Business & Community  
Development Manager  
**Suzanne Rhind**  
01953 880204  
suzanne@wayland.org.uk

Dragonfly Gallery:  
Arts & Events Manager  
**Susan Hollingworth**  
01953 880205  
susan@wayland.org.uk

Growing Together  
**Pam Morgan**  
Outreach Worker  
07503455263  
pamela.wayland1@gmail.com

HAPPY Project  
**Jean Williams Outreach Worker**  
01953 880235  
jean@wayland.org.uk

Visitor Centre & Tourism  
**Arts & Events Manager or duty Steward**  
01953 880212

Trustees  
**Jan Godfrey (Chair)**  
01953 880202  
jan@wayland.org.uk

All other enquiries to

**Reception:**  
01953 883915

Heritage  
**Bronwen Tyler**  
01953 483741

Website: [www.wayland.org.uk](http://www.wayland.org.uk)



**Wayland Partnership, Wayland House, Watton, Norfolk IP25 6AR**

**Registered Charity No. 1081310: Company No. 3869712**